

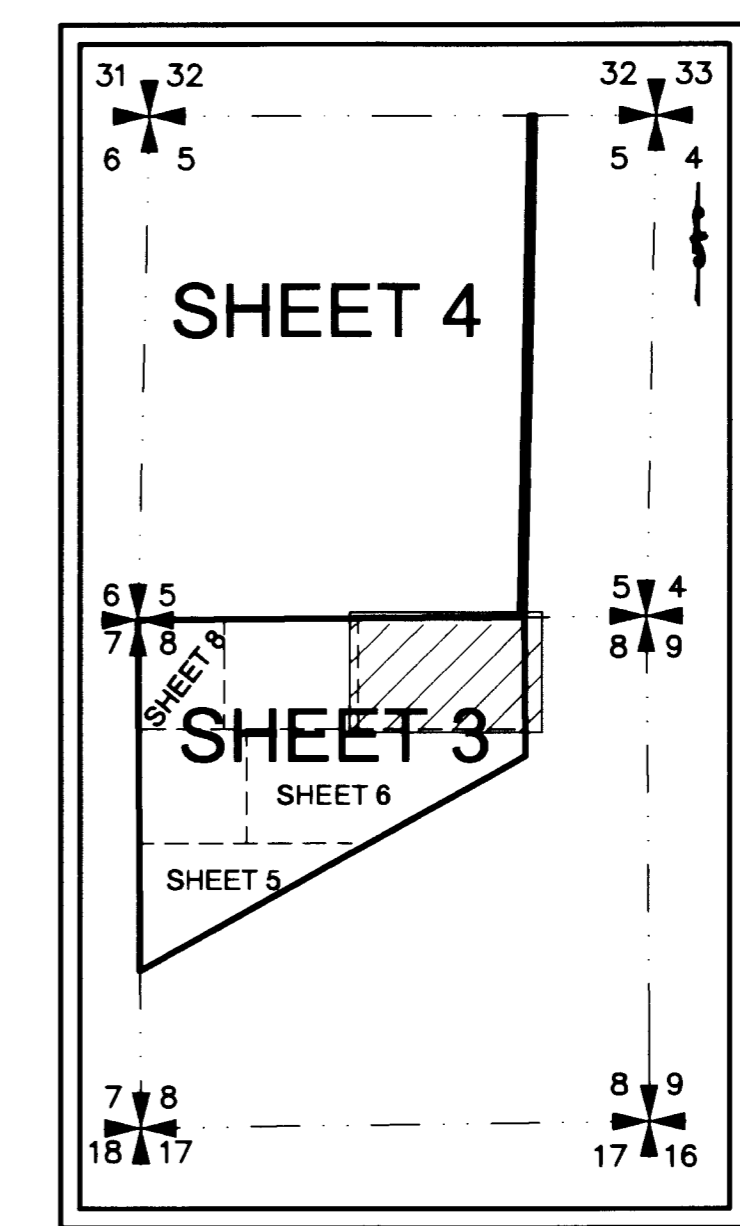
A PLAT OF
MAYA ESTATES
 SECTION 5 AND 8, TOWNSHIP 40 SOUTH, RANGE 38 EAST
 MARTIN COUNTY, FLORIDA

LEGEND

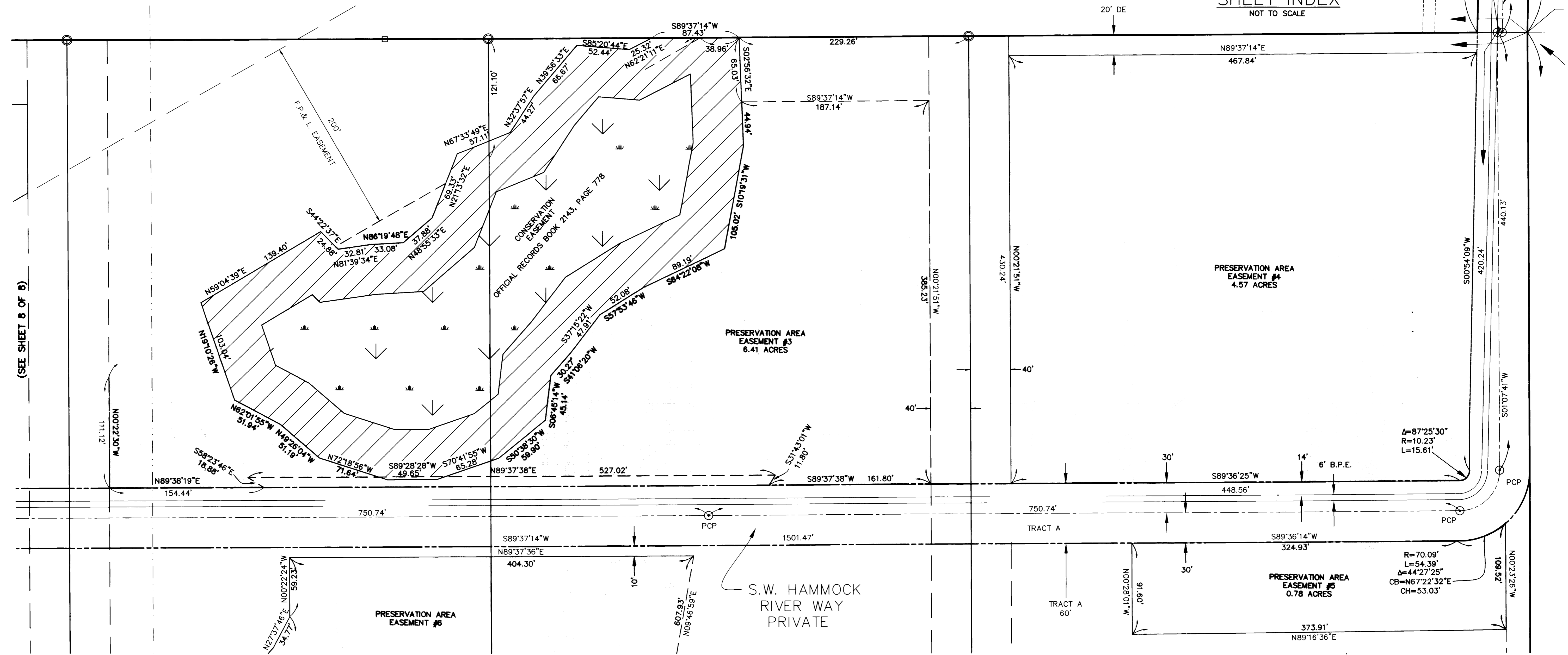
- CH - ARC CHORD LENGTH
- CB - ARC CHORD BEARING
- Δ - ARC DELTA
- L - ARC LENGTH
- R - ARC RADIUS
- D.E. - DRAINAGE EASEMENT
- O.R.B. - OFFICIAL RECORDS BOOK
- U.E. - UTILITY EASEMENT
- PRM - DENOTES P.R.M. (PERMANENT REFERENCE MONUMENT) NO. LB 959
- - DENOTES P.C.P. (PERMANENT CONTROL POINT) NO. LB 959
- B.P.E. - DENOTES BRIDLE PATH EASEMENT
- PG - DENOTES PAGE
- AC - DENOTES ACRES
- (C) - DENOTES CALCULATED BASED UPON FIELD MEASUREMENTS
- CCR - DENOTES CERTIFIED CORNER RECORD
- - DENOTES FOUND CONCRETE MONUMENT AS NOTED
- - DENOTES PERMANENT CONTROL POINT
- - DENOTES SET NAIL WITH DISK L.B.959
- - DENOTES LICENSED BUSINESS
- - DENOTES SET 5/8" IRON ROD AND CAP, LBFH LB959

NOTES

1. THE SOUTH LINE OF SECTION 8, TOWNSHIP 40 SOUTH, RANGE 38 EAST, MARTIN COUNTY, FLORIDA, IS TAKEN TO BEAR NORTH 89°15'02" EAST AND ALL OTHER BEARINGS SHOWN HEREON ARE RELATIVE THERETO.



(SEE SHEET 4 OF 8)



(SEE SHEET 6 OF 8)

(SEE SHEET 6 OF 8)

THIS INSTRUMENT PREPARED BY:
 TED E. PHILLIPS P.S.M. 5932, STATE OF FLORIDA
 FOR
 L.B.F.H., INC.
 CONSULTING ENGINEERS, SURVEYORS & MAPPERS
 3550 S.W. CORPORATE PARKWAY
 PALM CITY, FLORIDA 34990
 LB 959

lbfh CONSULTING CIVIL ENGINEERS, SURVEYORS & MAPPERS
 "Partners For Results, Value By Design"
 3550 S.W. Corporate Parkway, Palm City, Florida 34990
 (772) 286-3883 Fax: (772) 286-3925
 BPR & FBPE License No: 959 www.lbfh.com